

# Chor

**PMP Product Guide**



**BY ENSYSTEX**

chor  
**BY ENSYSTEEX**



## ENSYSTEX HISTORY

Over the last 20 years, Ensystem has developed the expertise to synthesize, source, formulate, manufacture, promote and distribute a wide range of Pest Management Professional actives and products. Based on the experience we have gained and what we have learned in the process of creating this lineup, we are highly confident that we can meet any present or future challenge with regards to manufacturing and supplying any Pest Management product.

|    |                 |       |
|----|-----------------|-------|
| 01 | BITHOR          | 3-4   |
| 02 | MAXXTHOR        | 5-8   |
| 03 | PROTHOR         | 9-12  |
| 04 | BORATHOR        | 13-16 |
| 05 | TERMITE BAITING | 17-20 |
| 06 | ABATHOR         | 21-24 |
| 07 | RODENTHOR       | 25-28 |
| 08 | AEROTHOR        | 29-30 |
| 09 | ZYTHOR          | 31-34 |
| 10 | VECTOTHOR       | 35-38 |
| 11 | EQUIPMENT       | 39-42 |

# SAVE TODAY



## WHAT MAKES ENSYSTEX DIFFERENT

We market the widest range of termite control actives of any single manufacturer, including:

- non-repellent
- repellent
- fumigant gas
- borates
- termite baiting systems

We own the EPA technical / end use registrations for all our actives and products.

Most formulating is done in house in the USA thereby ensuring consistency and high quality.



## THOR'S FORCES

Expiration of patents on active ingredients used by PMPs.

World-wide expertise in producing active ingredients.

Economically moving manufactured goods from producer to end user.

We are nearby and ready with 20 technical representatives located throughout the USA.

# SAVE TOMORROW

## MISSION

Thor's mission is to be the premier vertically integrated supplier of termite and pest management products to the structural pest management industry. Thor will in time make or source every significant post-patent structural pest control active ingredient, formulate them into products with high added value and distribute them directly to PMPs. Thor will fundamentally change the way smart PMPs source products and do business.

---

**A direct line between you  
and the manufacturer**

---

**We are in complete  
control of all aspects:**  
manufacturing  
marketing  
distribution  
support

---



**Manufacturer Direct** 

# 01

## BITHOR

THE POWER OF IMIDACLOPRID AND BIFENTHRIN

Indoors



Perimeter



Outdoors



Lawn



Ornamental



# THE ULTIMATE WEAPON ON PESTS INDOORS AND OUT

## BITHOR SC - The Power of Two Active Ingredients

Bifenthrin is a pyrethroid insecticide. Imidacloprid is a neonicotinoid insecticide. The combination of these two actives creates a double action against pests. Overwhelm all your pest problems with this dynamic combination of two great active ingredients.

## INSIDE. PERIMETER. OUTSIDE. TURF. ORNAMENTAL.

The perfect choice for the toughest indoor and outdoor jobs. No odor, high performance, and long-term residual action; plus all the safety features you demand. With its wide range of use sites and powerful combination of active ingredients, it makes sense to make BITHOR SC your go-to product for use in all situations and against all pests. Take care of household, turf and ornamental pests, all at one time, with one product. In fact, BITHOR controls over 100 different pests!

BITHOR is a discrete product that is not noticeable on most target surfaces. Your clients will see little evidence of your actual treatment, simply an eradication of their pest problems. The product is also non-sensitizing and no skin sensitivity issues will occur under normal usage.

BITHOR can be safely applied to plants, lawns, shrubs for tick or ant control in particular without any adverse effects. This product is classified as general use in most states so you can use BITHOR with confidence in even the most sensitive environments.



- |                            |   |
|----------------------------|---|
| <b>Active Ingredients:</b> | <b>5.0% Imidacloprid<br/>4.0% Bifenthrin</b>  |
| <b>Application sites:</b>  | <b>Indoors, perimeter, outdoors, lawn,<br/>ornamental</b>   |
| <b>Formulation Type:</b>   | <b>Suspension Concentrate</b>   |
| <b>Pests Controlled:</b>   | <b>Bed bugs, ants (including carpenter),<br/>fleas, mosquitoes, and over<br/>100 other pests.</b> |
| <b>Unit Sizes:</b>         | <b>1 gallon and 1 quart</b>   |

# 02

## MAXXTHOR

THE POWER OF BIFENTHRIN BY THOR

Termite



Food Handling



Indoors



Perimeter



Outdoors



Lawn



Ornamental





# EFFECTIVE AGAINST OVER 75 DIFFERENT PESTS

Maxxthor SC, Maxxthor EC, Maxxthor SG should be important parts of the arsenal of weapons you use against the pests you do battle against every day.

## Superior Active Ingredient

The active ingredient in all Maxxthor products is bifenthrin, a second generation synthetic pyrethroid highly effective against a wide range of pests.

## No Skin or Throat Irritation

Some other pyrethroids can cause irritation. This is because some pyrethroid molecules contain an alpha-cyano structure which is associated with irritation problems. The bifenthrin molecule does not contain an alpha-cyano structure.

## Superior Residual Life

Bifenthrin has the longest life of any current termiticide in Forest Service testing. This is due in part to the biphenyl structure contained in the bifenthrin molecule, a structure that is unique to the bifenthrin molecule among currently registered pyrethroids.

# MAXXTHOR SC (SUSPENSION CONCENTRATE)

## Incredibly Broad Sidewalk to Sink Label

Maxxthor SC is labeled for extremely broad usage, both indoors and outdoors, against a wide variety of pests. We call it Sidewalk to Sink. Combine this with its outstanding stability and a long-lived residual on almost any type of surface and you have a one-two punch against any kind of pest at any site.

## Virtually No Odor. No Unsightly Residues.

Maxxthor SC is formulated as a water based suspension concentrate, containing no smelly solvents. That means practically no odor when applied at label rates. Maxxthor SC is also formulated not to leave any unsightly residues.

## Long Live Maxxthor SC against Termites

Maxxthor SC's active ingredient, bifenthrin, is particularly stable in the soil, giving it excellent longevity as a termiticide. USDA Forest Service testing of bifenthrin\* has shown it to have an average termiticide effective life of 12 years. That's 12 years of 100% termite control. That's the longest average effective life of any termiticide active ingredient on the market today. And in Florida and Arizona, the effective life is 16 years and counting.

**Compare these results for bifenthrin to the 7 years average effectiveness of permethrin and 5½ years effectiveness of cypermethrin in the same tests.**

These results show bifenthrin to be a superior termiticide in terms of effectiveness and longevity. Make the move to the longer lasting termiticide today.

*\*USDA Forest Service testing conducted with a competing bifenthrin containing product applied at the Maxxthor SC lowest label rate when used as a termiticide.*

# GET SIDEWALK TO SINK PROTECTION WITH MAXXTHOR

## MAXXTHOR SG (SAND GRANULE)

### Lawns, Ornamentals, Structure Perimeters

The Maxxthor SG sand granule formulation allows easy application of this superior active ingredient onto lawns, ornamental plants and around structure perimeters for the control of a wide range of pests.

### Imported Fire Ants - Proven quick acting with long lasting action

Bifenthrin formulated as a sand granule has been proven to quickly suppress fire ant populations and to keep them at bay for extended periods of time.\*\* Bifenthrin suppresses fire ants quicker than many other active ingredients and keeps on working for months.

*\*\* Various Texas A&M studies conducted using a competing bifenthrin containing sand granule product formulated at same concentration as Maxxthor SG.*

## MAXXTHOR EC (EMULSIFIABLE CONCENTRATE)

### The choice to make against a wide range of pests

Maxxthor EC is a bifenthrin emulsifiable concentrate with the same high level of effectiveness as all other Maxxthor products. When used as directed, Maxxthor EC is a powerful insect control product that in particular is highly effective against a wide range of turf and ornamental pests.

### Extremely Broad Label – Under, Inside and Out

Maxxthor EC users also have the advantage of an incredibly broad “sidewalk to sink” label including full pretreat use against subterranean termites.

### The Economical Choice

Maxxthor EC is Thor’s most concentrated form of bifenthrin. This concentration minimizes shipping cost and storage space requirements.



# MAXXTHOR SC - MAXXTHOR EC - MAXXTHOR SG

A combined selection of pests and sites.

Always follow the label. Not all pests can be controlled at all sites.

## SITES

Residential  
Commercial  
Industrial  
Institutional  
Public  
Interior  
Exterior  
Perimeter  
Lawn  
Ornamental  
Parks  
Grounds  
Landscapes  
Athletic Fields

## STRUCTURAL PESTS

### Structural

Termites  
Wood Boring Beetles  
Carpenter Ants

### Nuisance

Ants  
Bed bugs  
Bees  
Wasps  
Hornets  
Fleas  
Ticks  
Spiders  
Mosquitoes  
Cockroaches  
Beetles  
Clothes Moths  
Crickets  
Earwigs

## LAWN PESTS

Mole Crickets  
Imported Fire Ants  
Japanese Beetle (Adults)  
Armyworms  
Sod Webworms  
Chinch Bugs

## ORNAMENTAL PESTS

Billbugs  
Bagworms  
Elm Leaf Beetles  
Earwigs  
White Flies

# 03

## PROTHOR

THE POWER OF IMIDACLOPRID BY THOR

Termite



Perimeter



Outdoors



Lawn



Ornamental



### WHY IMIDACLOPRID?

Prothor contains the active ingredient imidacloprid. Imidacloprid is the most widely used insecticide molecule in the world.

Imidacloprid's high degree of popularity is directly related to its high level of activity against important turf and ornamental pests and its ability to translocate in a treated plant to the point of pest attack against the plant. In particular, imidacloprid is highly effective against pests that attack below ground.

# TERMITES? NOT A PROBLEM WITH PROTHOR.

## Let Them Pass

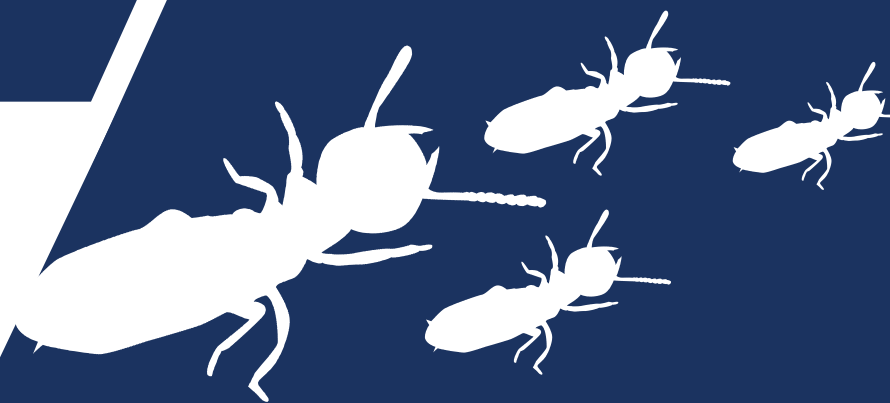
There are two type of termiticides, repellents and non-repellents. Repellents work by not letting termites pass through an area that has been treated with them. In contrast, non-repellent termiticides work by allowing termites to “pass through”, thereby setting a deadly trap. Imidacloprid belongs to the non-repellent group of termiticides.

## Advantages to Non-Repellents

- When applied to the soil at recommended concentrations, termites can't detect imidacloprid in the soil.
- Termites foraging in imidacloprid treated soil for food are not repelled but instead pass through it like the imidacloprid isn't even there.
- The foraging termites are then exposed to imidacloprid which transfers from the soil onto the exterior of their bodies.
- The delay of imidacloprid's toxic action allows affected insects to return to their colonies and further spread the active ingredient for a higher kill rate.

## The Prothor Viral Effect

If imidacloprid contaminated termites are able to return to the colony before dying, they also expose their nestmates to imidacloprid through the grooming process as their nestmates clean each other's exteriors. In this manner, the effects of imidacloprid can cascade through a termite colony as it is passed from one termite to the next during the grooming process.



## Prothor is great for termites. But it's also great against perimeter invading ants!

Prothor puts the proven power of imidacloprid to work for you against a wide range of perimeter invading ants. Prothor can be used at almost all points on your customer's property where ants nest, congregate and forage.

### Proven in University Testing

Testing at Purdue University in 2004 showed the power of imidacloprid to stop perimeter invading ants in their tracks. Imidacloprid applied as a perimeter band according to the label directions of a competing imidacloprid containing product stopped perimeter invading ants cold for at least 30 days. Compare that to the active ingredient cyfluthrin which gave significant control of ants for only two weeks in side by side testing.

# PROTHOR

## Ant Control Advantages of Prothor

The imidacloprid used in Prothor has several advantages in use compared to other products intended to control perimeter invading ants.

## Liberal Structure Exterior Application Directions

Some perimeter ant treatment products can only be applied preventively in a narrow strip along the perimeter of the structure at ground level. However, Prothor can be applied as a general surface treatment to structure exteriors to control ants. Prothor can also be applied to structural cracks, crevices and voids.

## Frequent Reapplication

Some perimeter ant products face severe limitations on their retreatment frequency. However, Prothor can be reapplied for ants as often as every 30 days. And unlike some products, there is no limitation on the number of times it can be applied per year.



## PROTHOR CONTAINING IMIDACLOPRID HAS SEVERAL ADVANTAGES IN USE COMPARED TO OTHER PRODUCTS INTENDED TO CONTROL PERIMETER INVADING ANTS

### PROTHOR SC 2 Sidewalk to Siding

Prothor SC 2 can also be used almost anywhere in a customer's yard. Use it on ornamentals, turf, trees, etc. to indirectly control ants by eradicating ant food sources. If ants are there, you can treat them with Prothor SC 2. Prothor SC 2 does not have any hard surface use restrictions.

### Tank Mixing

Prothor SC 2 can be tank mixed with other insecticides to create a one-two punch against ants. Always read and follow label directions.

### Prothor for Turf and Ornamentals

## The Power of a non-repellent. Imidacloprid by THOR.

Proven against a wide range of pests, imidacloprid is the most widely used insecticide in the world. And for good reason. The wide spectrum of insect pests that it is effective against is almost unparalleled. Its high level of effectiveness is proven by over 20 years of commercial use around the world.



### Number one insecticide in the world

Imidacloprid was first commercialized in the early 1990s. Even after all that time it remains a highly popular insecticide with a wide range of uses. In fact it's the number one insecticide in use today in the world.

### Low in toxicity

Imidacloprid is a neo-nicotinoid insecticide. Its mode of action is very specific to certain types of insect nerve receptors that are less abundant in mammals. This means it is highly toxic to insects but its toxicity to mammals is low. Good for you but bad for a wide range of insects.

## PROTHOR FORMULATIONS



### Prothor SC2

The high concentration of imidacloprid in Prothor SC 2 allows for convenient handling. Prothor SC 2 is available in a 27.5 ounce (mixes 100 gallons at the low label rate) 1.08 gallon (mixes 500 gallons at the low label rate).



### Prothor WSP

Prothor WSP is a 75% imidacloprid packed in water soluble packets. Four 2.25 ounce packets are included in each container (mixes 100 gallons at the low label rate).

# TURFTHOR

Imidacloprid is also used in our Turfthor ornamental products.

Wettable Powder (WP)  
8 x 2 oz Container

Water Soluable Packet (WSP)  
4 x 1.6 oz Container

Granule (0.5 G)  
30 pound bag



# 04

## BORATHOR

BORATE TECHNOLOGY POWERED BY THOR

Termite



Bait



Pretreatment



Indoors



Outdoors





# NATURAL BORATE WOOD PROTECTION PLUS GLYCOL PENETRANT

## Treat their food. Treat the Wood.

Borathor Max PT's active ingredient is a borate derived from the natural mineral borax. Borates are stomach poisons that control insects by poisoning them when they ingest them. Borathor Max PT is used to treat or load their food, which in this case is structural wood, with a toxic amount of a borate. Load the wood to a sufficient level with a borate and it is highly protected against attack by wood destroying pests.

## D.O.T. Powered

Borathor Max PT contains disodium octoborate tetrahydrate (DOT) at a concentration of 40% as its active ingredient. DOT's key attribute is that it is a water soluble borate making it easy to deliver to wood surfaces. DOT is also highly soluble in certain glycols and glycols and water combinations. This borate, glycol and water combination creates a powerful termiticide / insecticide / fungicide spray solution that goes to work as soon as it is applied to wood either by surface treatment or injection. Borathor Max PT coats the wood surfaces to which it is applied with a protective layer of DOT. The DOT in Borathor Max PT penetrates the wood with depths depending on factors such as wood moisture content and wood density. The glycols are added to enhance the distance of penetration.

## Long-lasting Protection!

Borates are inorganic. This means that they will not degrade over time. As long as treated surfaces are protected from moving moisture such as running water, the borates in BORATHOR MAX PT will remain in place on and inside the treated wood indefinitely, continuing to protect it from insect and fungi attack.



## Go Green

Borates are a natural and low toxicity approach to wood protection. Good for you and good for the environment. BORATHOR MAX PT is a perfect fit for any green building initiative.



# STOP WOOD DESTROYING PESTS

Borathor Max PT protects structures against termite attack by preventing termites from moving across treated surfaces such as the exposed surfaces of wooden structural components. Termites either turn back or are killed whenever they try to cross borate treated wood surfaces. This is primarily because termites ever so slightly sample wood surfaces as they cross them. Those that sample the borate treated wood surface are poisoned by their ingestion of the borate with their nestmates eventually abandoning any more attempts to cross the wooden surface.

In addition to termites, Borathor Max PT is labeled for the prevention and elimination of infestations of a wide range of other wood destroying insects and wood decay fungi. Wood decay fungi are killed when contacted by borate upon application.

**Borathor Max PT prevents or eliminates infestations of a wide range of wood destroying pests including the following:**

- Subterranean Termites (including Formosans)
- Drywood Termites
- Old House Borers, Longhorn Beetles and Powderpost Beetles
- Carpenter Ants
- Brown Rot (including Dry Rot), White Rot and other wood decay fungi

## **No Resistance**

Because the DOT in Borathor Max PT is natural, termites and other pests have not developed any resistance to its effects.



## **BORATHOR MAX PT**

**ACTIVE INGREDIENT-Disodium Octaborate Tetrahydrate (DOT)  
Primary Subterranean Termite Pretreat Protection Registered**

BORATHOR MAX PT contains 40% disodium octaborate tetrahydrate in a glycol solution. New homes under construction can be protected with Borathor Max PT against a wide range of wood destroying insects and fungi. Borathor Max PT is registered with the EPA for primary protection of structures under construction against subterranean termites. Use Borathor to treat the remainder of the structure against all types of wood destroying pests. It is the easiest glycol product to use and has outstanding storage stability across a wide range of temperatures for extended amounts of time.

Borathor Max PT can be used as a substitute for soil treatment. It can also be used to protect new structures against termite attack with and without

# BORATHOR PRODUCTS - THE NATURAL APPROACH TO INSECT AND FUNGI CONTROL

## BORATHOR POWDER

**ACTIVE INGREDIENT** - Disodium Octaborate Tetrahydrate (DOT)  
Potent insecticide / fungicide, effective against a wide spectrum of insect and fungi pests.

BORATHOR Powder is widely used to protect the wood in new and existing structures against attack from wood destroying invaders. BORATHOR Powder is an economical all around value leader when it comes to protecting wood in place against decay and damage. Because DOT is mineral derived, it should remain effective as long as the treated wood is in service.

**CONTROLS:** termites, wood boring beetles, carpenter ants, and wood decaying fungi

25 pound containers and 1.5 pound bags

## BORATHOR DUST

**ACTIVE INGREDIENT** - Disodium Octaborate Tetrahydrate (DOT)  
Long-lasting approach to controlling a wide spectrum of general household pests.

BORATHOR Dust, when applied into cracks, crevices and void spaces, is highly effective. It is approved for use both inside and outside. This is also approved for use in food handling establishments.

**CONTROLS:** cockroaches, ants, silverfish, earwigs, and crickets

1 pound containers

## BORATHOR SCATTER BAIT (COARSE)

**ACTIVE INGREDIENT** - Boric Acid  
Formulated onto a highly preferred bait matrix.

Like all Thor insect bait formulations, BORATHOR Granular Scatter Bait (Coarse Ground) is formulated for superior acceptance by a wide range of pests. This product is formulated on a durable carrier for long life. It is approved for use outside and inside, from structure perimeters to turf. It can even be used in food areas of food handling establishments. Take care of a wide range of pest problems with this one easy to use bait.

**CONTROLS:** ants, cockroaches, sowbugs, pillbugs

4 pound shaker jugs and 40 pound boxes

## BORATHOR SCATTER BAIT (FINE)

**ACTIVE INGREDIENT** - Boric Acid  
Fine particles for easy application.

The very fine particle size allows application in a manner similar to a dust while retaining the Borathor Granular Scatter Bait advantage of its high pest acceptance formulation. BORATHOR Fine Ground Granular Scatter Bait is ideally formulated for applications to cracks, crevices and void spaces and is approved for use in food areas of food handling establishments.

# 05

## TERMITE BAITING

THE POWER OF TERMITE BAITING BY THOR



Termite Baiting



Indoors



Outdoors



# COMPREHENSIVE BAITING TECHNOLOGY

## DIFLUBENZURON CSI BY THOR

### The power of Chitin Synthesis Inhibiting Diflubenzuron

The Termite Bait employs the active ingredient diflubenzuron. This active ingredient belongs to a group of actives called chitin synthesis inhibitors (CSIs).

### The Importance of Chitin

Chitin is an important component of the exoskeletons (exterior skeletons) that are possessed by insects such as termites. The exoskeleton cannot expand as termites grow so they periodically shed their exoskeleton to form a larger exoskeleton. This process is called molting.

### Dose Independent Toxicant

CSIs disrupt the formation of new chitin at the time of a termite's molting resulting in a failure of the termite to complete the molting process. This results in the death of the termite.

CSIs are referred to as dose independent toxicants. This is because the time of termite death (at molting) is independent of the time that the termite actually ingested the toxicant and the amount of the toxicant the termite consumed. This is the opposite of dose dependent toxicants whose effects are proportional to the amount of the toxicant to which the insect is exposed and the time of exposure.

With a CSI active ingredient termites can ingest the toxicant for an extended period of time with no effects until it molts, at which time the termite will die. However, other termites continuing to consume the toxicant would not die until their own molting, meaning that the other termites would see no connection between the death of a fellow colony member and the substance they were

consuming.

### An Ideal Colony Elimination Bait Toxicant

The progressive effect is the key attribute that makes diflubenzuron an ideal termite colony toxicant. Termites that attempt to molt after ingesting an amount of diflubenzuron sufficient to impair their molting process either die or are incapacitated by their inability to complete the molting process.

### Highly Palatable Bait Matrix

THOR Termite Bait is available in three forms, paper towel matrix, compressed tablet matrix and alpha-cellulose matrix. The paper towel bait is very convenient to use. Just open the station and stuff it full of bait. ISOPHOR Tablet Bait is enclosed in an edible burlap enclosure that allows for unrestricted termite access with maximum operator convenience. The alpha-cellulose powdered bait is a very palatable matrix that can be loaded into stations in large volumes (up to 400 grams per station). When the bait is



Compressed Tablet

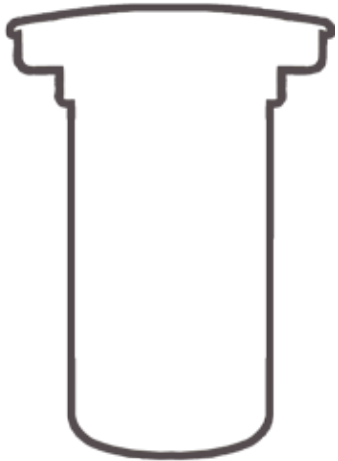


Alpha-Cellulose



Paper Matrix

# SIZE MATTERS. ONLY THOR GIVES YOU THE POWER TO CHOOSE.



wetted before use, the combination of alpha-cellulose and water forms an irresistible combination that no termite can resist.

## ISOPTHOR ORIGINAL

### The Largest Station

Independent research has consistently proven that termites prefer a larger food source. THOR Termite Baiting System leads the industry with the largest In-ground Stations by far. This ensures that the termites foraging near a structure are intercepted sooner.

### Unique, Patented, No Disturbance Station Design

Only THOR's In-ground Stations have a patented hollow center cavity so that the stations can be inspected and bait added without disturbing the termites in the station. This ensures that the transition from the intercepting wood to the bait occurs as easily as possible.

### Larger Bait Source = Better Termite Feeding

Since THOR's Stations are the largest, at 8.5" x 4.5", they hold significantly more bait than any other termite baiting station. According to independent research, bait stations which offer large amounts of bait are more likely to be located by termites, have



## ISOPTHOR EZE

- EZ install, open, inspect, bait
- Flexible
- Compact
- Field proven
- Isophthor EZE station is 1/3 the size of the original ISOPTHOR station allowing for greater versatility during installation
- 6.5" x 2.75"

**ISOPTHOR NOW FEATURES TRI-ANNUAL INSPECTIONS AND THE ABILITY TO BAIT AT THE TIME OF INSTALLATION**





## Focus Termite Attractant

FOCUS is a natural, non-toxic, food-based additive that is used in conjunction with in-ground termite bait stations. Once in contact with the soil, FOCUS works with micro-organisms to slowly release a small, precisely determined amount of carbon dioxide (CO<sub>2</sub>) into the soil. University research has shown that termites are attracted to the low levels of CO<sub>2</sub> that are naturally released by both rotting wood and termite nests. By mimicking this action, FOCUS enhances the effectiveness of any in-ground termite bait station.

## What you get with Isophor

### Station Installation

Stations come fully assembled and are easy to install. Just push the station into a hole in the ground.

### Station Inspection

Tri-Annual station inspection intervals means only three inspections per year. No need to remove or disturb wooden interceptors during inspection. This totally eliminates termite disturbance.

Largest interceptor to earth interface surface area available means high termite hit ratio. Easy twist on and off station top. Top removal tool extender bar minimizes bending over during inspections.

### Baiting with ISOPHTHOR Termite Bait

A true Tri-Annual inspection interval baiting system. Also, all stations can be baited at any time, including at installation. THOR's Termite Bait contains the chitin synthesis inhibitor diflubenzuron. No need to ever replace and throw away bait cartridges that have only been partially eaten.

Lowest disturbance bait station configuration and baiting method (patented). Nothing removed or exchanged during baiting or rebaiting. Just add bait. No termite "self-recruitment" necessary. Termites transition to eating bait naturally.

No worries with Isophor

# ISOPHTHOR

No license agreement to sign.

No initial system use fees or annual renewal system use fees to pay.

No manufacturer oversight, site visits or record review.

No transfer of any information (installation, inspection or customer) to manufacturer (or anyone).

No requirement to have a computer or to use baiting management software.

No required site installation or site inspection record keeping.

No surprises. Just proven baiting technology the way you want it.



Also from **ENSYSTEX: EXTERRA**

If component baiting is not your thing and you'd always like to be prepared for any size infestation sign up for Ensystem's EXTERRA baiting program.

With EXTERRA, PCO's are charged by the site they are servicing and are provided with the same quality baiting components as a PCO using ISOPHTHOR. As an EXTERRA operator, you are provided with unlimited bait and supplies ensuring that every termite infestation will be eradicated without affecting your bottom line.

# 06

## ABATHOR

THE POWER OF ABAMECTIN BY THOR

Indoors



Outdoors



Bait





# THE CONVENIENCE OF COCKROACH BAIT CONTAINING ABAMECTIN



## Powerful Active equals superior results

Abathor Gel Bait contains 0.05% abamectin. Abamectin is a time tested active ingredient well known for its high level of effectiveness against cockroaches and ants.

## The Clear Solution for Cockroaches.

Abathor Gel Bait is a clear gel. Avoid the unsightliness of a bait that is not clear by switching to the clear cockroach solution.

## High Attractiveness = High Effectiveness

No matter how effective an active ingredient is (and abamectin is just that), if cockroaches won't eat it, it won't work. Abathor Gel Bait is a mixture of carefully selected attractants, proteins, carbohydrates and other food sources proven to be highly attractive to a wide variety of cockroach species. No matter what type of cockroach, Abathor Gel Bait can handle them.

## Stays Moist to Keep on Working

Abathor Gel Bait is specially formulated to stay moist and to keep on working for extended periods of time, long after some other baits have dried up and lost their effectiveness.

## No Resistance Surprises

There is no known resistance to abamectin among cockroaches. This means you can always count on Abathor Gel Bait to be effective against cockroaches, wherever they are, wherever you find them.

## Economical and Easy to Apply

Abathor Gel Bait is priced to help you control cockroaches economically and is easy to apply. More proof of THOR working to create value for you.

# ABATHOR ANT BAITS

## Powerful active equals superior results

Abathor Ant Baits contain 0.011% abamectin. Abamectin is a time tested active ingredient well known for its high level of effectiveness against almost any species of ants.

## Multiple Species, Two Products

Abathor Ant Bait controls a variety of ant species with a single product. This creates convenience for you, eliminates guesswork and saves money. Fire ants are controlled by Abathor Fire Ant Bait.

## The Line Is Drawn Against Hard to Control Ants

Abathor Ant Baits are an irresistible combination of attractants, proteins and carbohydrates that appeals to even the hardest to control ants. Finicky eaters that other baits can't control are controlled with Abathor Ant Baits. Abathor Ant Bait is formulated to be highly attractive to a wide selection of ants including Argentine, Odorous House, Crazy, Little Black and Pavement Ants.

## Two Attractive Right-Sized Bait Matrices

The solid "food" component of Abathor Ant Bait is a specially selected "corn kernel grit" matrix. This matrix is sized to permit ants to easily take particles of the bait back to their colony. Abathor is also available with a "corn cob grit" matrix.

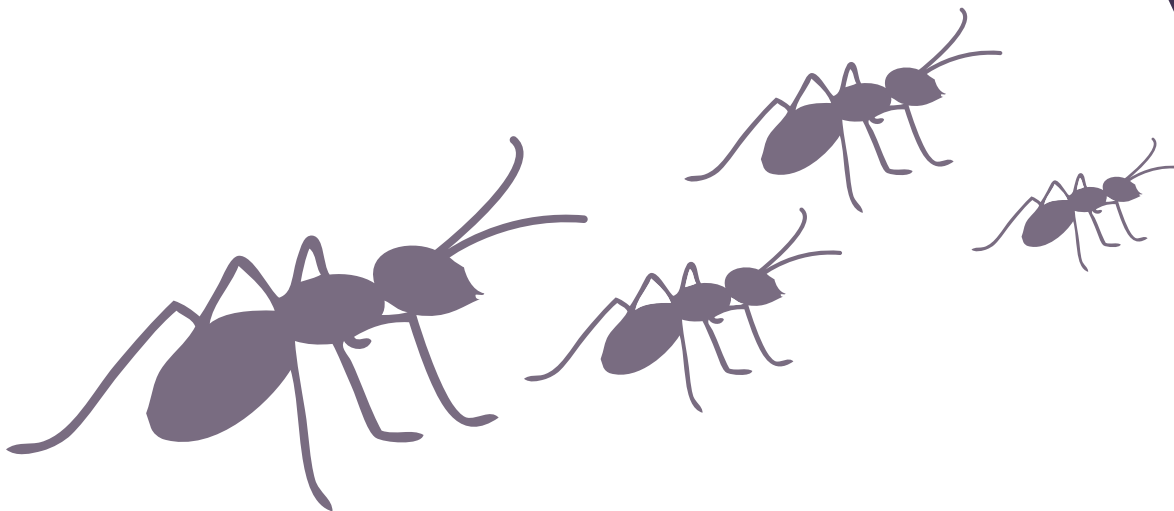
## Ant Colony Elimination

Abamectin is a relatively slow acting insecticide that can begin affecting ant populations within 24 hours. This means that foraging ants that find Abathor Ant Baits have enough time to take the bait back to the colony where it can be distributed among the colony members. If enough of the members of the colony consume the bait, the result can be ant colony elimination.

## Easy and Economical to Apply

Abathor Ant Bait is available in 2 lb and 8 oz containers.

Abathor Fire Ant Bait is available in 2 lb and 25 lb containers.



# ABAMECTIN FROM NATURE

## The Natural Insecticide From the Soil

Abamectin is a natural pesticide, derived from a bacteria found in the soil. This bacterium is called *Streptomyces avermitilis* and the two compounds that comprise abamectin are natural fermentation products of this bacterium. Abamectin is composed of two compounds called Avermectins (B1a and B1b) that are equally potent as insecticides.

Abamectin's mode of action is called GABA inhibition and abamectin is referred to as a GABA inhibitor. It works against insects by inhibiting their nerve impulses and paralyzing them. An advantage of abamectin is that while it acts on insects sufficiently fast, it doesn't act too fast.

In addition to being highly effective against important structural pests, abamectin is widely used to control pests in agriculture, horticulture and veterinary medicine.

## Powerful Against Pests. Easy on You.

Abamectin is a very powerful insecticide, and this is particularly the case against structural pests. Because it is so powerful against structural pests, abamectin needs to be present in the target structural pest's diet at only a low level. For instance, abamectin is highly effective against ants at levels as low as 100 parts per million in their diet and against cockroaches at levels as low as 500 parts per million in their diet. Because abamectin only needs to be present in a structural pest's diets at such a low level to be effective, abamectin containing structural pest products sold by THOR are very



Indoors 

Outdoors 

Broadcast over large areas 

Around Structure Perimeters 

Individual Colony 

Mound Treatment 

# 07

# RODENTHOR

THE POWER OF RODENT CONTROL BY THOR

IN AND AROUND



Homes

Residential Buildings

Food Processing Facilities

Industrial Buildings

Commercial Buildings

Agricultural Buildings

Public Buildings



# THE POWER OF BROMADIOLONE WITH THE VALUE OF THOR

## The Power of Bromadiolone Combined with the Value of THOR

RODENTHOR Rodent Baits contain the advanced anticoagulant, single-feeding active ingredient, bromadiolone, at a concentration of 0.005%. Anticoagulants such as bromadiolone accumulate in the liver where they inhibit and steadily decrease Vitamin K levels in the blood. This prevents the blood from clotting which eventually leads to death.

Bromadiolone is such an effective anticoagulant that, even at such a low concentration in the diet as found in RODENTHOR Rodent Baits (0.005%), it is able to kill both rats and mice in one feeding. Combined with their excellent acceptance and THOR value, this combination makes RODENTHOR Rodent Baits the new power in rodenticides.

## Single Feeding Effectiveness of Bromadiolone Equals High Performance

A single feeding of 0.7 grams of bait containing bromadiolone contains a lethal dosage for an average size domestic mouse. This amount of bait is approximately 25 - 30% of a mouse's average daily food consumption (3 grams). A mouse may be expected to consume this quantity in 8-10 meals out of the 30+ meals it may eat daily.

Similarly, 5.6 grams of RODENTHOR Rodent Bait contains a lethal dosage for an average rat - that amount being approximately 30% of a rat's average daily food consumption of 25 grams. It may consume this quantity in 4-5 meals out of the 10-15 meals a day it would normally eat.

## Less Toxic to Non-Target Animals Than Other Rodenticide Active Ingredients

A 10 kilogram (22 pound) dog would need to consume 2-3 kilograms (4.5 to 6.5 pounds) of RODENTHOR Rodent Baits to consume a lethal (LD50) dose; less than 1 kilogram (2 pounds) of a rodenticide bait containing the active ingredients brodifacoum or flocoumafen would be lethal to that same dog.

## Contains the Bittering Agent BITREX

RODENTHOR Rodent Baits contain the bittering agent BITREX. BITREX is the brand name for the most bitter substance ever discovered. It is inert and odorless, yet the inclusion of only a tiny amount in a food substance is all that is needed to make products containing it unpalatable. Children are particularly sensitive to the taste of BITREX, making it a powerful deterrent to accidental ingestion of RODENTHOR Rodent Baits by humans and, to a certain extent, by domestic animals.

All outdoor bait placements must be made in tamper-resistant bait stations, locked and secured. Refer to product label for complete use directions and restrictions.



# RODENTHOR SOFT BAIT

## High Power Combined with Superior Palatability

RODENTHOR Soft Bait is the next big step forward in rodenticide technology. It takes rodent bait palatability and acceptance to a new level. The soft bait is formulated based on expanded knowledge of rodents' biological senses resulting in a more palatable bait.

The new composition and added attractants increase its desirability thereby allowing for the use of much less bait to achieve a lethal dosage in rodents. The soft bait is especially suitable for places where a lot of food is available. It can be used as both a "clean-out" or "maintenance" rodent bait. Added oils ensure lasting freshness and a continuously moist product.

## Performance Proven Palatability

In a recent study, RODENTHOR Soft Bait was proven to be the most palatable bait formulation tested, even over the rodents' normally preferred diet. It also achieved a 100% mortality rate in both mice and rats. Tests have shown that rodents prefer certain tastes to others and that they also prefer soft baits to harder ones.

This knowledge was used in order to maximize the attractiveness of RODENTHOR Soft Bait by combining the bait with attractants that ensure the rodents will be drawn to it. The added attractants also cover the taste and smell of the active ingredient and ensure that the rodents feed on the bait for a longer period, consuming more of it.



## RODENTHOR Soft Bait Benefits Include:

**Especially suitable for rodents which are reluctant to take other baits**

**Contains added attractants to encourage bait uptake**

**Moisture proof making it suitable for indoor and outdoor use**

**Individual bait bags keep bait fresh**

**BITREX protection against accidental ingestion**





## RODENTHOR BLOCK BAIT

RODENTHOR Block Bait comes in a traditional wax block form that is both highly palatable and weatherable. Its resistance to molding makes it perfect for wet environments.

RODENTHOR Block Bait contains the highly effective active ingredient bromadiolone that is effective against both rats and mice including warfarin resistant rodents. RODENTHOR Block Bait also contains the bittering agent BITREX.

## RODENTHOR RODENT (RAT) BAIT STATION

Value leading rodent (rat) station

Designed for use with RODENTHOR Rodent Baits (Block and Soft)

Rugged child-resistant design

Removable bait trays (optional)

Vertical and horizontal bait retention posts

Advanced easy-to-open locking mechanism

Two piece design eliminates “live hinge” breakage.



# 08

## AEROTHOR

THE POWER OF AEROSOLS BY THOR

All Aerothors fit in the Aerothor  
Aerosol Delivery System

Indoors



Outdoors



Carpet



### COMPLETE LINEUP OF AEROSOLS TO TAKE CARE OF ALL YOUR PEST PROBLEMS

#### INSPECTHOR

**ACTIVE INGREDIENT** - Pyrethrins 0.50%, Piperonyl Butoxide 5.00%  
Quick flush Agent. Economical replacement for PT565+ XLO®

**AEROTHOR INSPECTHOR** contains natural Pyrethrins and the tried and true synergist Piperonyl Butoxide. Use it as an inspection and flushing agent. Registered for use in food handling establishments and for general carpet treatment for fleas.

16.5 ounce can / 6 cans per case



## TOTAL INSECT CONTROL

**ACTIVE INGREDIENT - Esfenvalerate 0.05%**

**Registered for use in food handling establishments**

AEROTHOR Total Insect Control provides contact and residual kill of a wide range of structural pests including ants, crickets, spiders, cockroaches, carpet beetles, centipedes, scorpions, silverfish, firebrats, fleas, earwigs, sowbugs, pillbugs and ticks. AEROTHOR Total Insect Control can be used as a crack and crevice, spot or surface spray.

15 ounce can / 12 cans per case

## MULTI-PURPOSE INSECT CONTROL

**ACTIVE INGREDIENT - Permethrin 0.25%**

**Use against a wide range of household invaders including full carpet flea treatment**

AEROTHOR Multi-purpose Insect Control is effective against a wide range of household pests including ants, cockroaches, Palmetto bugs, silverfish, firebrats, crickets, scorpions, spiders, millipedes, centipedes, sowbugs, pillbugs and fleas.

AEROTHOR Multi-purpose Insect Control is an excellent crack, crevice and spot treatment product. It can also be used to treat floors and floor coverings to kill all stages of flea infestations as well as points of ant entry, ant trails and ant nests.

15 ounce can / 12 cans per case



## FLEA ADULTICIDE + IGR

**ACTIVE INGREDIENTS - Pyriproxyfen 0.015%,  
Tetramethrin 0.40%, Phenothrin 0.30%  
Contains NyLar Flea Growth Regulator  
Same Growth Flea Regulator as Ultracide®**

AEROTHOR Flea Adulticide+IGR contains a unique combination of three highly active insecticide compounds including a flea growth regulator, a knockdown synthetic pyrethroid and a longer acting synthetic pyrethroid. This powerful combination kills adult fleas, flea larvae and eggs as well as prevents the development of flea larvae into adult fleas.

AEROTHOR Flea Adulticide+IGR can be used on carpets, rugs, upholstery and pet bedding, all of the areas that fleas normally infest. The large 20 ounce can provides for maximum coverage per can.

20 ounce can / 12 cans per case

## WASP AND HORNET KILLER

**ACTIVE INGREDIENTS - Tetramethrin 0.20%, Phenothrin 0.125%  
Quick kill plus lasting residual**

The combination of synthetic pyrethroids, tetramethrin and phenothrin, in AEROTHOR Wasp and Hornet Killer provides a powerful one-two punch combination against wasps, hornets and yellow jackets. This second generation 1,1,1 trichloroethane free formulation of AEROTHOR Wasp and Hornet Killer has a high dielectric strength of 41.0 KV. Can be used indoors or outdoors.

# 09

## ZYTHOR

THE POWER OF SULFURYL FLUORIDE BY THOR

Fumigation



Image courtesy of Bingham's Professional Pest Management

# THE NEW POWER IN SULFURYL FLUORIDE STRUCTURAL FUMIGATION

## A Major Commitment by Thor

Zythor represents a major commitment by Ensystem II to the future of the structural fumigation business. We are only the 2nd company to ever market sulfonyl fluoride for structural fumigation. We take pride in our successful entry into the structural fumigation market which occurred in 2006.

## If you're a fumigator, we can serve you

Zythor is registered for use in every important structural fumigation market in the United States. We are committed to making Zythor available to any responsible fumigator who wants to use it.

## Chloropicrin

Included in the price you pay for Zythor (at no extra charge) is all the chloropicrin you need to support your use of Zythor. We believe this feature of our fumigation program shows our commitment to the safe and proper use of Zythor. More evidence of Thor's commitment to value and excellence in fumigation.



## Zythor Stewardship Program

The Zythor Stewardship Program best exemplifies Ensystem II's commitment to the safe and effective use of Zythor every time it is used. The responsible parties of all entities that use Zythor are obligated to sign a Zythor Stewardship Agreement and to actively participate in the Zythor Stewardship Program. By signing the Zythor Stewardship Agreement, the signing party is committing their entire organization to its active and ongoing participation in the Zythor Stewardship Program for as long as they use Zythor.

While no amount of planning, training and care can assure that no mishaps will ever occur during a fumigation, the Zythor Stewardship Program is based upon the precept that training and attention to detail can go a long way towards making the fumigation a safer process.

# FREQUENTLY ASKED QUESTIONS ABOUT ZYTHOR

**Will you be able to get the product to me when I need it and in the quantity I need?**

Yes. We guarantee our ability to do this by not taking on more fumigators as customers than our supply and logistics channel can reliably accommodate. We have multiple suppliers of sulfuryl fluoride. We have the capacity to supply a substantial percentage of the demand for sulfuryl fluoride in the United States (and around the world).

**If I use Zythor, can I still use another SF product?**

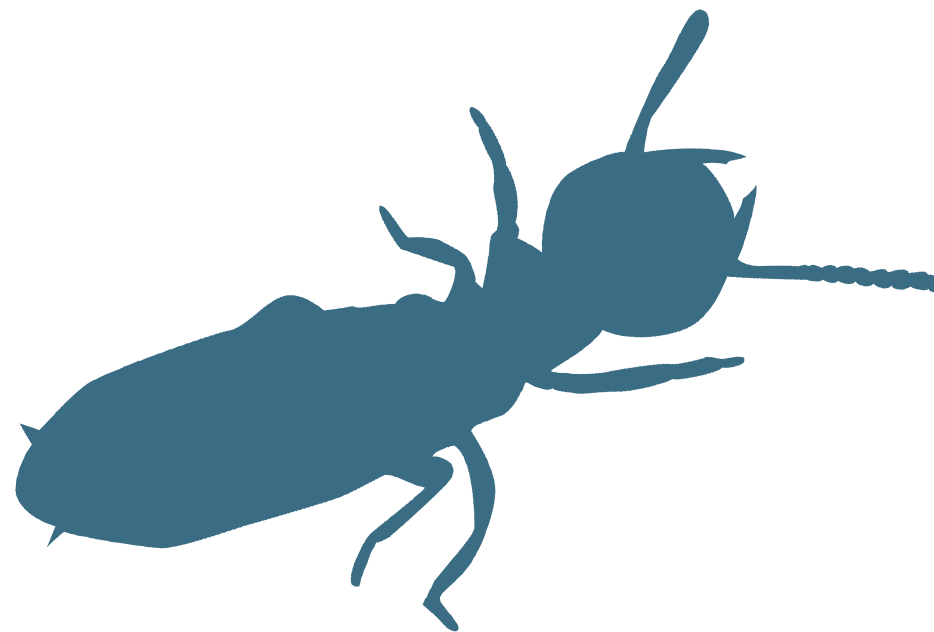
Yes, without any limitations. We do not believe it is necessary to pick sides in the fumigant supply business. We will never create a requirement that in order to be a Zythor operator in good standing you will have to give us a certain percentage (or any) of your business. We believe competition is healthy and we welcome the idea of a free market in the manufacture and supply of fumigants.

**Are there any differences in the use pattern of Zythor as compared to the current label for the other SF structural fumigation product?**

Zythor's dosages, exposure periods and aeration procedures are the same as that for all other sulfuryl fluoride products (with the exception of bed bugs).

**What is involved in becoming a Zythor operator?**

You must first sign the Zythor Stewardship Agreement. This agreement obligates you to participate in the Zythor Stewardship Program and only pertains to Zythor. It does not create an obligation on the part of Ensystem II to sell or supply you Zythor nor does it create an obligation on your part to buy or use Zythor. However if you do not agree to actively participate in the Zythor Stewardship Plan, you cannot purchase or use Zythor.

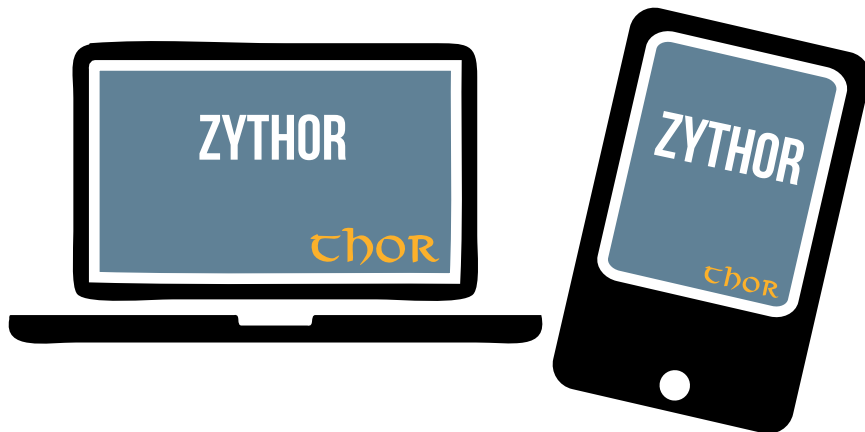


## How will I compute the doses of Zythor to be applied to structures?

Dosing is calculated using our free Fumicalc software which is available for iPhone, Android, PC, and Palm PDA devices. Fumicalc easily and quickly computes doses for both Monitored and Un-Monitored Applications in a matter of seconds.

## Why should I do business with you?

We hope you will agree that competition is always better than a lack of competition. We believe that improvements in the SF market, to the benefit of all fumigators, have occurred as the result of our entry into the sulfuryl fluoride structural fumigation market. We have already seen clear evidence of this where we have introduced Zythor and other Thor products.



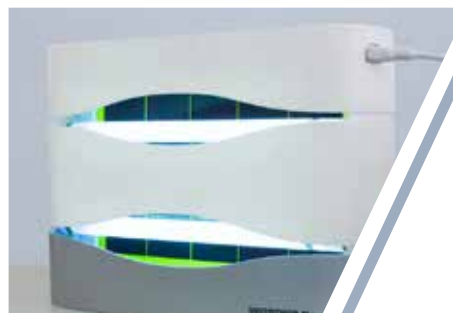
# 10

## VECTOTHOR

THE POWER OF FLY CONTROL  
LIGHT TRAPS BY THOR



# EUROPEAN DESIGN THAT IS PROVEN TO WORK



## Kills More Flies - Faster

A cutting edge solution with the highest catch rates, VECTOTHOR Fly Control Light Traps are the premium choice for HACCP food management programs, the hospitality industry, hospitals, or anyone who wants peak performance in their fly management program. Ensystem has an ongoing commitment that our products will be the best in the market.

When we decided to enter the UV-A Fly Trap market it was imperative that we developed a line of fly traps that offered clear technological improvements.

Our link with Alcochem in Holland provided us with the European design and build excellence that we sought; and flowing from this Holland link came the relationship with Philips and their unique Philips Long-life UV-A lamps. The technological leap forward provided by the research team at Philips was vital in providing a fly control system that outperforms the market.

The Philips Long-life lamps have proven to last at least two years (twice as long as other lamps!) while providing up to twice as much UV-A light. This is the heart of our unit, and clearly more UV-A output means better flying insect kill. The lamps also offer energy savings; a 15w Philips Long-life lamp provides more attractant UV-A light than most 36 watt lamps!

Philips' focus on performance, rather than on cost-cutting, is also important. This strategic partnership aligns with Ensystem's focus on being the best in the market. And the best is what we deliver with the VECTOTHOR range, killing more flies – faster!



## SEA EAGLE Explosion Proof

The explosion proof VECTOTHOR SEA EAGLE has a water hose proof IP rating of 68 and specially designed stainless steel front grid which optimizes the attraction potential.

|                     |  |
|---------------------|--|
| Area coverage:      | 1614 ft <sup>2</sup> effective coverage              |
| Light source:       | 2 x 18 Watt shatterproof Philips Longlife UV-A lamps |
| Catch type:         | By means of Temperature Optimized glue board         |
| Lamp life time:     | 17,500 hrs   |
| Protection rating:  | IP 68 (explosion proof)                              |
| Dimensions (LxWxD): | 37 x 23.6 x 5.5 in                                   |
| Mounting position:  | Wall mounted   |



## OSPREY Discrete

The VECTOTHOR OSPREY is designed for kitchens, hotels, food production areas, offices, cafes, restaurants, shops and more.

|                     |  |
|---------------------|--|
| Area coverage:      | 861 ft <sup>2</sup> effective coverage               |
| Light source:       | 2 x 15 Watt shatterproof Philips Longlife UV-A lamps |
| Catch type:         | By means of Temperature Optimized glue board         |
| Lamp life time:     | 17,500 hrs   |
| Protection rating:  | IP 21 (drip proof)                                   |
| Dimensions (LxWxD): | 18.5 x 12.75 x 4 in                                  |
| Mounting position:  | Wall mounted   |



## KINGFISHER Water-Proof

The VECTOTHOR KINGFISHER is designed for shops, restaurants, wet industrial environments and more.

|                     |  |
|---------------------|--|
| Area coverage:      | 1076 ft <sup>2</sup>                                 |
| Light source:       | 2 x 15 Watt shatterproof Philips Longlife UV-A lamps |
| Catch type:         | By means of Temperature Optimized glue board         |
| Lamp life time:     | 17,500 hrs   |
| Protection rating:  | IP 65 (hose proof)                                   |
| Dimensions (LxWxD): | 22.5 x 8.75 x 6.25 in                                |
| Mounting position:  | Wall, ceiling, or flag mounted                       |



## KESTREL Innovative

The VECTOTHOR KESTREL allows it to be mounted square on the wall or like a diamond. Easy to service, stylish and effective.

|                 |  |
|-----------------|--|
| Area coverage:  | 322 ft <sup>2</sup> effective coverage       |
| Light source:   | 1 x 15 Watt UV-A lamps                       |
| Catch type:     | By means of Temperature Optimized glue board |
| Lamp life time: | 9000 hrs                                     |



## SPARROWHAWK Versatile

The innovative design of the VECTOTHOR SPARROWHAWK allows it to be mounted on the wall or a tabletop or shelf. Easy to service, stylish and effective the VECTOTHOR SPARROWHAWK features European design build standards.

|                     |  |
|---------------------|--|
| Area coverage:      | 161 ft <sup>2</sup> effective coverage       |
| Light source:       | 1 x 8 Watt UV-A lamp                         |
| Catch type:         | By means of Temperature Optimized glue board |
| Lamp life time:     | 4500 hrs                                     |
| Protection rating:  | IP 20 (dust protection)                      |
| Dimensions (LxWxD): | 5.5 x 11 x 5.5 in                            |
| Protection rating:  | IP 21 (drip proof)                           |
| Dimensions (LxWxD): | 10.5 x 10.5 x 3.25 in                        |
| Mounting position:  | Wall mounted or free standing                |



## FALCON Innovative

The VECTOTHOR FALCON is designed for offices, cafes, restaurants, and shops where your patrons sit and you want to discretely eliminate troublesome flies.

|                     |  |
|---------------------|--|
| Area coverage:      | 376 ft <sup>2</sup> effective coverage       |
| Light source:       | 1 x 18 Watt PL UV-A lamp                     |
| Catch type:         | By means of Temperature Optimized glue board |
| Lamp life time:     | 9000 hrs                                     |
| Protection rating:  | IP 21 (drip proof)                           |
| Dimensions (LxWxD): | 17.25 x 7.5 x 8 in                           |
| Mounting position:  | Wall mounted                                 |



## PEREGRINE Tough

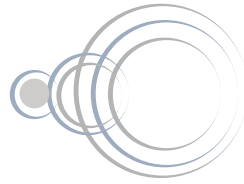
The VECTOTHOR PEREGRINE is designed for the toughest conditions and most severe fly problems in kitchens, food production areas, and more.

|                    |  |
|--------------------|--|
| Area coverage:     | 1291 ft <sup>2</sup> effective coverage                    |
| Light source:      | 3 x PHILIPS 15w RoHS certified shatterproof UV-A lamps     |
| Catch type:        | Temperature Optimized glue board with silicone paper cover |
| Lamp life time:    | 17,500 hrs   |
| Protection rating: | IIP 21 (drip proof)  |





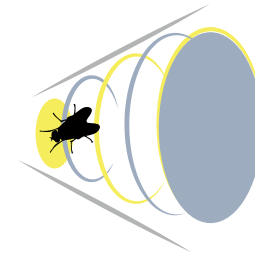
Most powerful UV-A light on the market



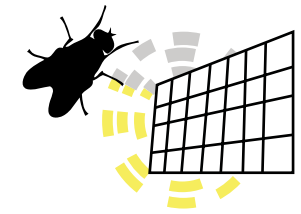
Natural UV-A light Technology



Natural Contrast Grid



Heat seaker technology



Temperature optimized glueboards



Dimensions (LxWxD): 18.5 x 12.75 x 4 in  
Mounting position: Wall mounted

### HARRIER Rugged

The VECTOTHOR HARRIER is designed for the toughest industrial uses, kitchens, food production areas, and more.

Area coverage: 1722 ft<sup>2</sup> effective coverage  
Light source: 4 x 15 Watt shatterproof Philips Longlife UV-A lamps  
Catch type: By means of Temperature Optimized glue board  
Lamp life time: 17,500 hrs  
Protection rating: IP 21 (drip proof)  
Dimensions (LxWxD): 19.75 x 13.5 x 6.25 in  
Mounting position: Wall, flag or ceiling mounted



### MERLIN Versatile

The VECTOTHOR MERLIN modular design is an ideal fit for kitchen, food production areas, and more.

Area coverage: 484 ft<sup>2</sup> effective coverage  
Light source: 1 x 15 Watt shatterproof Philips Longlife Uv-A lamps  
Catch type: By means of Temperature Optimized glue board  
Lamp life time: 17,500 hrs  
Protection rating: IP 21 (drip proof)  
Dimensions (LxWxD): 22 x 4.75 x 4.75 in  
Mounting position: Wall, ceiling or cabinet mounted, or free standing

## Shedding light on increased sales and new clients with Vectothor UV-A Light Meter.

The VECTOTHOR UV-A Meter enables you to offer a greater level of service to your clients and, more importantly, secure new clients to increase your VECTOTHOR UV-A Fly Trap sales. Indeed, use of this precision tool has been proven to secure more customers and generate greater income for your business. When you approach a potential customer who already has a UV-A Fly Trap in place, offer to measure the UV-A light intensity from their unit.

When installing a VECTOTHOR Fly Trap, the VECTOTHOR UV-A Meter can be used to identify an area on the wall which offers the lowest UV-A background, thus optimizing the placement of the Fly Trap. The VECTOTHOR UV-A Meter is an absolute UV-A meter, that accurately measures the absolute UV-A light intensity from any lamp or other UV-A source. This is why it can be used to show potential clients when their current unit has no real UV-A power; or when a lamp needs to be replaced.

# 11

## EQUIPMENT

THE RIGHT EQUIPMENT TO GET THE JOB DONE



# THE COMPETITIVE EDGE

Ensystem is committed to helping you maintain that competitive edge through its broad THOR line of manufacturer-direct product formulations. But your own responsibilities do not end with the active ingredient on the label. Delivering a premium pest control experience to the customer depends upon many other factors, and our variety of THOR equipment will help you meet all of these needs.

Our hardware has been designed with the belief that enhanced features should benefit both our PCOs and their end customers. For example, our high-performance ACCUTHOR Gel Gun is precision-engineered for easy delivery of the targeted amount of gel bait. Wastage of product is minimized for PCOs, and the homeowner will be convinced of a peerless performance that cannot be matched by the use of a simple gel tube or a bait gun of lesser construction.

The ACCUTHOR Gel Gun's stainless steel composition guarantees long-term durability and reinforces the professional presentation that becomes more important to a successful PCO's business every year.

Another item in our high-performance lineup is the ACCUTHOR Compressed Air Sprayer. This kind of heavy-usage item is exactly where the PCO cannot afford to compromise, and THOR exceeds the standard once again. A stainless steel composition, without any side seam, provides the kind of toughness for which perpetual wear and tear are no match. A pressure relief valve prevents any chemical spraying across the top of the tank. And the 4-way crack and crevice tip eases access to small openings. Together, these refinements provide a premium product at great value.

Allow THOR to meet and exceed all of your growing professional demands. You may already be aware of THOR's ability to deliver superior pest control formulations. Now examine and consider our THOR line of equipment that can round out your additional needs in providing first-class pest control service.



## DUAL: POWERLIGHT

Designed by professionals for professionals, this is the most powerful flashlight available for the pest control industry offering both white light and UV-A light.

Light Source: 5w Cree LED + 5w UV-A LED  
Lumens: 300

# PRECISION PMP EQUIPMENT



## COMPRESSED AIR SPRAYER

### Key Features:

- Pressure relief valve: no chemical spraying across top of tank
- 4- way crack and crevice tip with holster on tank
- Stainless steel pump barrel
- Stainless steel wand extension
- O-ring piston for smoother action and reduced friction
- Neoprene strainer with greater surface area (more durable and easier to clean)
- Sprayer includes complete soft parts repair kit
- Available with 9", 18", or 24" extension



## AEROSOL DELIVERY SYSTEM

### Key Features:

- Comes with a heavy duty fabric can holder constructed of rugged nylon
- Compatible with most manufacturers' aerosol products as well as the complete Aerothor line
- Field tested all over the world
- Crack and crevice attachment



## GEL BAIT GUN

### Key Features:

- Allows for a higher level dosing control
- Unlike most application guns the ACCUTHOR gel gun sucks gel under negative pressure from the front end of the bait tube
- Produces a high level of repeatable dosing accuracy, no matter how large or small the dose
- Multi-position dosing wheel inside the grip
- Works with Abathor Gel Bait Cartridges and any other standard 30-35 gram gel bait cartridges

## HIGH POWER TORCHES

This line is simply the best flashlight value on the market today. Made from rugged aviation aluminum alloy and designed to withstand rough handling. Available in three models to meet whatever your needs may be.



### THOR POWER

**Brightest torch available**

Lumens : 3500

Range: 3,275 ft

Working time: 100 mins



### THOR COMPACT

**Powerful beam with a long battery life and rated IP67**

Lumens : 1200

Range: 650 ft



### THOR MICRO

**Slips into your top pocket yet burns brighter than torches many times larger**

Lumens : 700

Range: 490 ft



# thOR

**BY ENSYSTEX**

Thor is the premier supplier of six of the most popular actives used by PMPs today.

**1-866-FOR-THOR FOR-THOR.COM**

